

SUPPORTED BY

ecclesiastical



The Queen's Award  
for Voluntary Service



Made possible with  
**Heritage  
Fund**



heritage **open days**



Gloucester  
Civic Trust



# GLOUCESTER

## Heritage Open Days

**Friday 8th to Sunday 10th  
September 2023**

[www.gloucestercivictrust.org/heritage-open-days](http://www.gloucestercivictrust.org/heritage-open-days)

# Welcome

## to Gloucester Heritage Open Days 2023

**National Heritage Open Days** began in 1992 and we started here in Gloucester in 1994, making this our 29th year. HODs are often described as the showcase of the Civic Trust and we are delighted to have a number of new events in our programme this year. The national theme for this year's HODs is Creativity Unwrapped.

All events are free to access and most do not require booking but those indicated with a B must be booked. Unless otherwise stated, you can book online at

<https://buytickets.at/gloucestercivictrustlimited> or in person at The Folk of Gloucester Thursday to Saturday 10.00-16.00.

There are limits to numbers at some events and these are indicated. Where booking is not required there may be a restriction on numbers entering at one time. Stewards will advise.

You will find this brochure and the daily schedule on the Civic Trust website [www.gloucestercivictrust.org](http://www.gloucestercivictrust.org) but there will also be paper copies available in key places around the City. We ask that, if you have received this by email, you will forward copies onto all interested family and friends.

**We hope you will enjoy what we have to offer.**

### SPONSORED BY



**Gloucester Civic Trust Limited**

Company Registered in England & Wales. Reg No. 01078805 Charity No 264719  
Registered Office: Bishop Hooper House, 99-103 Westgate Street, Gloucester GL1 2PG

### HOD 2023 Team

**Debbie Vass**  
Team Co-ordinator;

**Chris Burton**  
Guided Walks;

**Paul Drinkwater**  
Talks;

**Maggie Goodchild**  
Cultural and Historic Venues;

**Rose McDowell**  
Places of Worship;

**Marina Moore**  
Music;

**Emily Gibbon**  
Marketing

### KEY

- ◆ = map ref.
- ♿ = wheelchair friendly
- B = booking required

### CONTENTS

Guided Walks	3
Talks	10
Music	14
Historic Venues including Gloucester Cathedral	15
Cultural Venues including the Docks	21
Places of Worship	25
Events and Useful Links	29
Map	31



### Beatrix Potter

◆ C6 ♿

**Friday 8th September 14.00, Saturday 9th September 14.00, Sunday 10th September 14.00**

**Meet at the Beatrix Potter Museum, 9 College Court**

In 1903 Beatrix Potter published one of her most loved tales "The Tailor of Gloucester". It was inspired by a visit she made to the city. This guided walk takes in the places of Gloucester which are closely connected with Beatrix Potter. The walk lasts about 45 mins.



### Blackfriars Priory

◆ E5 ♿ (partial access)

**Friday 8th September 11.00**

**Meet at entrance off Ladybellgate Street.**

A chance to explore Britain's most complete Dominican Priory. Blackfriars is owned by English Heritage and managed by Gloucester City. Most of the 13th century church remains, including a rare scissor-braced roof. The walk lasts about 1 hour.

### Black & White Buildings of Gloucester

◆ D6 ♿

**Friday 8th September 14.00**

**Meet at St Michael's Tower, The Cross**

A walking tour of 15th Century timber framed buildings in the city centre, pointing out structure, architecture and brief historical background. Are they really black and white? The walk lasts about 1 hour.



### Tour of Cathedral Precincts

◆ B5 ♿

**Friday 8th September 11.00, Saturday 9th September 11.00**

**Meet at Cathedral South Porch**

A history of the area surrounding the Cathedral from the earliest Minster church up to the most recent developments. The walk lasts about 1 hour.

### Children's Walk

◆ D6 ♿

**Saturday 9th September 11.15**

**Meet at St Michael's Tower, The Cross**

**Children must be accompanied by an adult. 10 children max**

A guided walk around Gloucester aimed specifically for children aged 9-12. The walk lasts about 1 hour.



## Gloucester's Christian Heritage

◆ D6 ♿

**Sunday 10th September 13.45**

**Meet at St Michael's Tower, The Cross**

There is an old saying 'As sure as God's in Gloucester'. Both Christianity and Gloucester have 2,000 years of history. This walk traces Gloucester's rich Christian heritage over those years as reflected in its people, places and events. The walk lasts about 1 hr 30mins

## Eastgate Chamber

◆ E7 B

**Friday 8th September 11.00, Saturday 9th September 11.00, Sunday 10th September 11.00**

**Pre-booking required. Max 18 per walk**

**Meet outside Boots in Eastgate Street**

This underground chamber on Eastgate Street reveals the remains of the Roman city defences and the East Gate dating back to about AD 68 when Gloucester was founded. This walk lasts about 45 mins and is not accessible by wheelchair.



## George Whitefield **NEW**

◆ D6 ♿

**Saturday 9th September 11.00**

**Meet at St Michael's Tower, The Cross**

George Whitefield was born in the Old Bell Inn, Gloucester in 1714 and ordained in St Mary de Crypt Church. Shunned by the established church he became an Evangelist, preaching in the open air. He spent much of his time in the new colonies of America where he died. Recent controversy over his ownership of slaves in Georgia persuaded the City Council to change the wording on his plaque. This walk traces the Gloucester Whitefield connections. The walk lasts about 1 hour.

## Gloucester City Tour

◆ D6 ♿

**Friday 8th September 11.00 and 14.00, Saturday 9th September 11.00 and 14.00, Sunday 10th September 11.00 and 14.00**

**Meet at St Michael's Tower, The Cross**

Discover the fascinating story of Gloucester from Roman times to present day. This is a guided walk through the heart of one of Britain's oldest cities, where history has truly left its mark. The walk lasts about 1 hr 15mins



## Hillfield Gardens

◆ B10 ♿ (partial access)

**Saturday 9th September 10.30 and 14.00**

**Meet at Denmark Road entrance. Road parking is available nearby.**

Take a guided walk around these beautiful gardens which have many fine trees and are home to three monuments of historical significance: Scriven's Conduit, the King's Board and the chancel of the 12th century leper chapel of St Mary Magdalene. The walk covers some uneven ground in places so sensible footwear is essential. The walk lasts about 1 hour.

## Historic Characters

◆ D6 ♿

**Friday 8th September 11.00, Saturday 9th September 11.00, Sunday 10th September 14.15**

**Meet at St John's Church, Northgate Street**

This tour brings alive some of the famous and influential people and colourful characters who were born and lived in Gloucester. Their fame and achievements extended far and wide, but we remember their local origins. The walk lasts about 1 hr 15mins



## Historic Docks

◆ G3 ♿

**Friday 8th September 11.00, Saturday 9th September 11.00, Sunday 10th September 11.00 and 14.30**

**Meet outside the Waterways Museum in Gloucester Docks**

Take a guided walk around Britain's most inland port. The walk lasts about 1 hour.

## Kings Square: a self-guided trail **NEW**

◆ D7 ♿

**Saturday 9th September 11.00-16.00**

**King's Square**

Collect map from Kings Square to uncover the Square's recent history. Suitable for anyone aged 10+.

From an "example to the country" in 1972 to a "city centre eyesore" in 2013, a lot can happen in 40 years. Join us to recover the history of the 1972 design of Kings Square and add your memories to a digital archive.

(see Talks section for details of a talk about the Square's history on Saturday 9th September at 18.00 in the The Ed Shed at The Folk, Westgate St GL1 2PG Pre-booking required).





## Llanthony Secunda Priory

◆ H2 ♿

**Friday 8th September 11.00 and 14.00, Saturday 9th 11.00 and 14.00, Sunday 10th September 11.00 and 14.00**

**Meet by the viewpoint next to the canal-side entrance.**

This guided walk explores the priory which was founded in 1136. By the end of the 15th century, Llanthony was the richest Augustinian house in England entertaining the court of Henry VII in 1500 and 1501. There is level access throughout the grounds and inside the buildings. Some paths are a little uneven. The walk lasts about 1 hour. (see entry on Historic Venues for details of general opening times for visits during the weekend).



## Monks, Canons and Friars

◆ A5

**Sunday 10th September 14.00**

**Meet at St Oswald's Priory, Archdeacon St.**

Discover the lives led by those who served in the many religious communities in Medieval Gloucester. This guided walk will take you to the sites of some of the places in which they lived, worked and prayed. The route includes some uneven ground. Sensible footwear required. This walk lasts about 1 hour.

## North Atlantic Slave Trade

◆ F5 ♿

**Saturday 9th September 14.00**

**Meet outside St Mary de Crypt, Southgate Street.**

This walk looks at both sides of the story of slavery and abolition, and its associations with Gloucester. The walk is all on hard surfaces but includes a couple of ramps and bridges. The walk lasts about 1hr 15mins



## The Story of Gloucester's Pubs and Inns

◆ D6 ♿

(for most of walk)

**Saturday 9th September 11.45, Sunday 10th September 11.45**

**Meet at St Michael's Tower, The Cross**

A tour of some of the fine historical pubs in the City Centre. The walk lasts about 1hr 30mins

## Railway History

◆ E5

**Friday 8th September 10.45**

**Meet at entrance to Blackfriars Priory off Ladybellgate Street.**

A two and a half mile walk round the key spots of Gloucester's railway history. Start at Blackfriars, walk through the docks to Llanthony Bridge then via Park Road to Barton Gates and via Bruton Way to the railway station. We look at what remains on site and how it fits into the story. The walk lasts about 1hr 30mins and ends at Gloucester Railway Station.



## Discovering Gloucester's Famous Rainbow Streets NEW ROUTE THIS YEAR

♿

**Friday 8th September 15.30, Saturday 9th September 15.30, Sunday 10th September 15.30**

**Meet in Hopewell Street GL1 4HG**

Join internationally acclaimed colour visionary and Gloucester's very own 'Queen of Colour', Tash Frootko, as she takes you on a lively and informative walk around the famous Rainbow Streets which she has created. This tour begins at Hopewell Street off Barton Street Gloucester which is the latest of Tash's projects. Return to the City Centre via the Rainbow Square. Tash has rapidly gained a reputation for being the lady who turns streets into rainbows and transforming parts of the city that have fallen into disrepair. This feel-good tour is a must for people of all ages and anyone who has a passion for colour and creativity. The walk lasts about 1hr 30mins

## Rhymes & Reasons

◆ E7 ♿

**Friday 8th September 14.15**

**Meet outside Boots in Eastgate St**

Discover some of Gloucester's famous locally born poets like Ivor Gurney and W.E. Henley, brought to life in this fascinating walk through the centre of the city. You will also explore some of the surprising origins of old Gloucester rhymes. The walk lasts about 1 hour.

## Richard III

◆ D6 ♿

**Friday 8th September 14.00, Sunday 10th September 14.00**

**Meet at Emperor Nerva Statue, Southgate Street**

This walk tells of Richard III's important three-day visit to Gloucester in 1483, as part of his Royal Progress. It explains the granting of the significant Charter to the city. You will hear how he spent his time here and be shown some of the buildings Richard would have seen. The walk lasts about 1 hour.



## Robert Raikes

◆ D6 ♿

**Friday 8th September 11.45, Sunday 10th September 14.30**

**Meet at St Michael's Tower, The Cross**

This walk tells the story of Robert Raikes, newspaper publisher, prison reformer and promoter of the Sunday School movement and shows some of the buildings in Gloucester connected with him. The guided walk last about 1 hour and ends at Robert Raikes House in Southgate Street.





## Roman Times

◆ E7 B

**Friday 8th September 11.00, Saturday 9th September 11.00, Sunday 10th September 11.00** Pre-booking required. Max 18 per walk

**Meet outside The City Museum, Brunswick Road**

Hear from your guide how the Romans came to Gloucester (Glevum). See the walls they built. Walk through the area of the Roman Forum (marketplace) now buried 3 metres beneath our feet. Find out about the importance of Emperor Nerva to the story of Roman Gloucester. Discover Roman artifacts in the Museum. The walk lasts about 1 hour.

## Royal Gloucester

◆ D6 ♿

**Friday 8th September 14.15, Saturday 9th September 11.00**

**Meet at St Michael's Tower, The Cross**

For over 1100 years Gloucester's history has been shaped in no small part by the interest, patronage and occasional displeasure of the reigning monarch. Kings and Queens of England have come here to hold parliament, equip armies, grant charters, go hunting, be crowned, and be buried. You will see some of buildings and places in Gloucester at the heart of this royal history and hear some of the fascinating stories connected with them. The walk lasts about 1hr 30 mins.



## Saxon Gloucester

◆ D6 ♿

**Friday 8th September 11.00, Saturday 9th September 11.00, Sunday 10th September 11.00**

**Meet at The Folk, Lower Westgate opposite St Nicholas Church**

Discover the traces of Gloucester's Saxon history. Hear the story of Aethelflaed, the daughter of Alfred the Great, who became Lady of the Mercians. Aethelflaed built St Oswald's Priory and was buried there in 918. Learn about the role she played in shaping the city as we know it. The walk lasts about 1hr 15mins

## The Siege of Gloucester 1643

◆ D6 ♿

**Friday 8th September 11.15, Saturday 9th September 11.15 and 13.45, Sunday 10th September 11.15**

**Meet at St Michael's Tower, The Cross**

This walk visits some of the places of interest connected with the Siege of Gloucester which took place during the English Civil War. The siege was arguably Gloucester's finest hour when the small garrison of Parliamentarians held out against the might of the Royal Army led by the King himself. The walk lasts about 1hr 30mins

## That's Entertainment

◆ D6 ♿

**Saturday 9th September 11.30**

**Meet at St Michael's Tower, The Cross**

A walk down Westgate Street to see buildings, including the locations of former cinemas and theatres where Gloucester citizens indulged in their pleasures and pastimes. The walk lasts about 30 minutes.

## River Twyver Walk

**Friday 8th September 10.30**

**Meet on the footbridge between Abbeydale Community Centre (GL4 4BL) and the children's play area.**

**There is ample car parking by the Community Centre.**

A walk along the Twyver where it forms the boundary between Abbeydale and Abbeymead. See the sites of some of the now dismantled mills, the likely places where the Romans started the canal into the city and the Royalists cut off the water supply during the Siege of Gloucester. Stout shoes required. The walk takes about 2 hours.



## Westgate Street and Cathedral Quarter Heritage Walk

◆ D6 ♿

**Friday 8th September 13.45, Saturday 9th September 13.45**

**Meet at St Michael's Tower, The Cross**

One of four original Roman routes, Westgate is one of the oldest and best-preserved areas of Gloucester and the main commercial route linking the Cathedral to the rest of the city. See its array of stunning historic buildings including the 15th Century timber framed Fleece Inn, Judge's Lodgings and The Folk of Gloucester. Find out how the Heritage Action Zone, with the award of nearly £2m, is helping to regenerate and revitalise the buildings and life in this area. The walk lasts about 1hr 15mins and ends at The Folk of Gloucester, Lower Westgate Street.

**Booking required. Max. number 45 per talk for all talks in the Ed Shed unless otherwise stated. Book online at <https://buytickets.at/gloucestercivictrustlimited> or in person at The Folk of Gloucester Thursday to Saturday 10.00-16.00 unless otherwise stated. For other talks see the entries below re. booking and max. numbers**

**Access to the Ed Shed is via The Folk in Westgate Street GL1 2PG or the rear of The Folk in Quay Street**



## The History of Wallsworth Hall

♿ B

**Nature in Art, Wallsworth Hall, Main A38, Twigworth GL2 9PG (use this postcode in Sat Nav).**

**Friday 8th September 11.00 and 15.00**

A fine Georgian mansion situated just north of Gloucester, Wallsworth Hall has a curiously obscure history. Since 1988 it has been the home of Nature in Art, the world's first museum dedicated to art inspired by Nature. Director, Simon Trapnell, will provide a fascinating insight into the Hall and the Nature in Art collection.

Booking required <https://natureinart.org.uk/event/the-history-of-wallsworth-hall-an-illustrated-talk/> Max. 50

There will be free entry to the Hall and talks on the day. (see entry under Cultural Venues for details of tours).

## The History of Hempsted

♿ B

**St Swithun's Church, St Swithun's Road, Hempsted GL2 5LH**

**Friday 8th September at 11.00, Saturday 9th September and Sunday 10th September at 14.30**

Short talk by local historian Debbie Hotchkins.

(see entry under Places of Worship for details about the church and opening times)

## Origins and History of Mariners Chapel

**Mariners Chapel in the Docks**

**Friday 8th September 12.15**

**No booking required**

The chapel was opened in 1849 for sailors and boatmen 'to care for their souls'. The work later expanded to include coffee shops & education. Robert Kingston, a current Chapel trustee, will give a 30 min talk on its origins, history and current role in the city.



## Gloucester and its Tall Ships

◆ C4 ♿ B

**The Ed Shed at The Folk, Westgate St (Courtyard)**

**Friday 8th September 14.00**

Gloucester Docks opened for business in 1827 with local sailing craft and seagoing ships trading in timber, corn and salt until the Second World War and afterwards being used for film making, pleasure trips and sail training. The dry docks and boatyard still have the capacity to repair craft from a bygone era of commercial trade. This talk illustrates some of the boats and the stories associated with them. The talk will be given by Tony Conder.



## Gloucester's Ancient Water Supplies

◆ C4 ♿ B

**The Ed Shed at The Folk, Westgate St (Courtyard)**

**Friday 8th September 18.00**

From springs and wells to piped water, Paul Drinkwater tells the story of how Gloucester's water supplies have developed from the springs and wells of Romans, Monks and Friars times to today's piped water system providing water to every home.

## Gloucestershire and the Atlantic Slave Trade

◆ C4 ♿ B

**The Ed Shed at The Folk, Westgate St (Tower)**

**Saturday 9th September 10.30**

Gloucester was not involved in the slave trade to the extent that Bristol was. However, it has surprising connections on both sides of the debate in the late 18th and early 19th centuries that would lead to Abolition. This talk by Tony Conder looks at the information now available about the extent of the influence of the trade on the city and county and some of our well known characters who were involved

## Wotton House: A Societal and Arboreal History

◆ B9 ♿ B

**International School, Wotton House, Horton Road GL1 3PR**

**Saturday 9th September 11.00**

**Max. 50**

It has been part of the Wotton Landscape since 1707, home to some fascinating characters and, for almost 100 years, educating many students. Our talk given by John Swann, Head of Humanities at Wotton House International School, will present a student led research project on the Horton family and subsequent owners, the buildings and the gardens past and present.

(see entry under Historic Places for details of tours on Saturday 9th September)



## Artisan Art: vernacular wall paintings in Gloucestershire, 1550-1620

◆ C4 ♿ B

**The Ed Shed at The Folk, Westgate St (Tower)**

**Saturday 9th September 12.00**

Kathryn Davis, visiting fellow at Kellogg College, Oxford and independent heritage and planning consultant, will be giving an introduction to historic wall paintings, with reference to those at the Folk.

## Whittle

◆ B4 ♿ B

**St John's Methodist Church, Northgate St GL1 2AN**

**Saturday 9th September 14.00**

**Max. 50**

Learn about how a secret factory and disguised Cotswold village link to Whittle's first jet engine to fly. Dr John Jones, a former engineer, will talk about Whittle's fascinating story; the man and the battles he had to fight.

*(see entry under Cultural Venues for details of drop-in tours of the Jet Age Museum)*



## Dating Timber Frame Buildings

◆ C4 ♿ (partial) B

**Starting from The Ed Shed (Courtyard) at The Folk, Westgate St**

**Saturday 9th Sept 14.00**

**Max. 12 Tour lasts about 45 minutes**

This will be a walk around talk of The Folk with Andy Moir, Director of 'Tree Ring Service', a company that specialises in dendrochronological dating.

## Kings Square Recovered

◆ C4 ♿ B

**The Ed Shed at The Folk, Westgate St (Courtyard)**

**Saturday 9th September 18.00**

From an "example to the country" to "city centre eyesore", Gloucester's Kings Square highlights the history of urban change in the city. This talk by Adam Coleman, architectural historian and PhD candidate, will share archival materials from Kings Square Recovered, a project exploring the 1972 design of Kings Square, and invite people to contribute to ongoing research.

*(see entry under Guided Walks for details of a self-guided trail on Saturday 9th September)*

## Severn Vale Eels

◆ C4 ♿ B

**The Ed Shed at The Folk, Westgate St (Courtyard)**

**Sunday 10th September 11.00**

The Severn Vale historically supported an abundant and healthy eel population, but where are they now? A talk to highlight the local importance of freshwater eel and our present day conservation practices by Dr Laura Weldon, Principal Research Officer at the Wildfowl and Wetlands Trust.

## Innovative Engineering in Gloucestershire

◆ C4 ♿ B

**The Ed Shed at the Folk, Westgate St (Courtyard)**

**Sunday 10th September 14.00**

Over the past 50 years a creeping revolution has occurred in the products used for fossil fuel extraction. A Gloucestershire company has been a prominent participant with innovative designs and patented technology the competition that could not equal. City guide Terry Matthias will tell that story.

## Entertaining Gloucester

◆ C4 ♿ B

**The Ed Shed at the Folk, Westgate St (Courtyard)**

**Sunday 10th September 18.00**

City guide Julie Brooks raises the curtain on local entertainment in the 19th and 20th centuries. The programme features theatres, performers, community events and cinema in Gloucester.



GLoucester  
BID

Gloucester  
City Council



## Waites of Gloucester

◆ E5 ♿

**Friday 8th September 11.00 (for 30 - 45 minutes)**

**St Mary de Crypt Church, Southgate GL1 1TP**

The Waites are modelled on a band of musicians run by the City of Gloucester in the 16th and 17th centuries. They will entertain with a wide variety of instruments used during this period.

## Bygonz Perform

◆ B4 ♿

**Saturday 9th September 11.30 (for 30 - 45 minutes)**

**St Nicholas' Church, Westgate Street GL1 2PG**

Early music with pipes and tabors in the wonderful acoustic of St Nicholas's Church.

## Bygonz Wandering Minstrels

◆ B4 ♿

**Saturday 9th September 13.30 - 15.30**

**Gate Streets, Cross and The Folk of Gloucester, Westgate Street**

Catch the popular minstrels in full costume performing on their mediaeval inspired instruments around the centre of the city

## Silver Singers

◆ C4 ♿ B

**Saturday 9th September 13.00-14.00 (for 30-45 minutes)**

**St Mary de Crypt, Southgate.**

This local choir return with a programme of enjoyable easy listening music.

## Ypotryll

◆ C4 ♿ B

**Saturday 9th September 13.00 (for 30-45 minutes)**

**St Nicholas's Church, Westgate Street**

The three members of Ypotryll (named after a mythical mediaeval beast) present music, both English and European, from the 13th-15th centuries for voice and instruments.



## Bearland House

◆ D5 B

**Longsmith Street**

**Friday 8th September Tours at: 11.00 and 14.00**

**Pre-booking required . Maximum 15 per tour. Tour lasts about 30 minutes.**

This is an impressive 18th century building with an ornamental façade, forecourt, and fine wrought iron railings and gates. The interior boasts a carved wooden staircase and decorated ceilings. It was purchased by a County High Sheriff in 1764, and the ghost of his daughter is said to appear at the staircase window.



## Blackfriars Priory

◆ E5 ♿ (partial access)

**Ladybellgate Street**

**Guided Tour: Friday 8th September at 11.00**

**Meet at the entrance off Ladybellegate Street. The tour will last about 1 hour.**

A chance to explore Britain's most complete Dominican Priory, owned by English Heritage and managed by Gloucester City. Most of the 13th century church remains, including a rare scissor-braced roof.



## Brockworth Court

B

**Court Road, Brockworth GL3 4QU**

**Saturday 9th September**

**Tours at: 14.00 and 15.30 lasting 45 minutes per tour.**

**Pre-booking required with maximum of 15 per tour.**

Brockworth Court was initially the residence for the Priors of Llanthony Priory. Following the dissolution of 1540, Henry VIII granted it to the Guise family until the late 19th Century. It is now owned by the Wiltshires, the present generation of whom have lovingly restored the property and gardens. Interesting features include the tithe barn and a priest hole in the house.

More information at: [www.historichouses.org](http://www.historichouses.org) and [www.greatbritishgardens.co.uk](http://www.greatbritishgardens.co.uk)



## The Fleece Hotel and Undercroft

◆ D5 B

### UNIQUE OPPORTUNITY

Westgate Street

Friday 8th September

Five tours of the building and Undercroft at 10.30, 11.30, 13.00, 14.00 and 15.00

Pre-booking required Max 12 per tour.

Meet at the Cathedral Quarter HQ at 21 Westgate Street.

The tours will last 45 minutes each giving time to prepare with Hi Vis jackets and Hard Hats.

Note: steep and ancient steps make it only suitable for the able bodied.

The Fleece Inn was built around 1500, one of the "Great Inns" built by the Abbey. By 1665 it was known as the Golden Fleece which reflected the wool trade. The property was sold by the church in 1799 and remained in private ownership until 2004.

Now owned by Gloucester City Council, it is being completely renovated and you have a chance to look at the building work in progress and see some points of interest that have been uncovered.

The 12th century tunnel vaulted undercroft is thought to be the best example in Europe of a rich merchant's warehouse. Known locally as the "Monks Retreat", it was a lively and much loved bar when the Fleece was last open.



Apple Day 21st October 2023



## GLOUCESTER CATHEDRAL

◆ B5/6 &

Saturday 9th September 10.00 - 17.00

Please note that the East End of the Cathedral and Tribune Gallery will be closed for worship from 16.00

Entry to the Cathedral is by voluntary donation, however on Heritage Open Days we are delighted to offer events and tours to visitors free of charge.

A warm welcome and 1000 years of history await you at Gloucester Cathedral, a former Benedictine Abbey founded in the 11th century and one of the most spectacular buildings in the country. The Cathedral is famous for its extraordinary fan vaulted cloisters which appear as Hogwarts in the Harry Potter movies. A stained glass window the size of a tennis court, the tomb of the murdered King Edward II and the mysterious Whispering Gallery are just a few of the treasures that visitors will discover whilst here.



## Highlights from the Medieval Library

Chapter House, Gloucester Cathedral

Friday 8th September 11.00 - 13.00 and 14.00 - 16.00

Come along to the Chapter House to see a display of the original items chosen by our Library volunteers from the Cathedral's historic Library and Archives.

## The Stonemasons' Workshop at Gloucester Cathedral

&

Workshop of St Peter, Pitt Street GL1 2BH

Saturday 9th September 10.00 - 15.00

Gloucester is one of only a few Cathedrals that still has its own onsite Stonemasons' workshop. Enjoy carving demonstrations and find out more about the work that this team do to conserve and restore an extraordinary building.

**PRE-BOOKING is required for the following events. Tickets can be reserved online via the Cathedral website or in person at the Welcome Desk from Monday 21st August. If booking in person please check Cathedral opening times before travelling. Visit [www.gloucestercathedral.org.uk](http://www.gloucestercathedral.org.uk) or call 01452 508210 for more information.**



## Guided Highlights Cathedral Tour ♿ B

**Saturday 9th September 10.30, 11.00, 12.00, 13.30, and 14.00**

**Tours last for 1 hour**

Find out about the fascinating world of the monks who used to live here, visit the tomb of the murdered King Edward II, hear about stunning stained glass and see where Harry Potter was filmed.

## Guided Crypt Tour, Gloucester Cathedral ♿ B

**Saturday 9th September 11.30, 12.30, 13.30, 14.30 and 15.30**

**Tours last for 30 minutes**

Descend into the Crypt to discover the earliest part of the Cathedral. Explore the chapels and passages used by the monks 900 years ago, as well as the central chamber where bones were once stored.

*Suitable for all ages but must be able to manage a flight of 10 stairs.*

**ACCESS STATEMENT - There is level access to the main Cathedral and Stonemasons' Workshop. The Tribune Gallery and Crypt are accessed by stairs.**

## Gloucester Furniture Exhibition ◆ F5 ♿

**Southgate Street GL1 1TX**

**Friday 8th and Saturday 9th September 09.00 - 16.30**

A historic Roman Wall inside the store is on public view. The lower level of the wall is part of a Roman Colonia dating back to 97AD. At street level it is a medieval building.

## Kings School Tours to include: ◆ B6

**The Little Cloister House, Old Bishops Palace and Dulverton House Saturday 9th September**

**Times of tours: 10.00, 11.00, 12.00, 13.00 and 14.00 hrs to last for 50 minutes each**

**Tours start at the Old Bishops Palace, Pitt Street and include:**

The Little Cloister House: a 17th century timber fronted property next to Gloucester Cathedral, built over a medieval undercroft. The herb garden and remains of the old monastic infirmary are close by.

The Old Bishops Palace: The 19th Century residence of the Bishops of Gloucester built on the site of the medieval abbot's lodging, now used by The Kings School.

Dulverton House: Is currently used as the sixth form centre for Kings School but it holds many secrets from its long history. It was originally part of the medieval infirmary buildings housing a chapel and a residency. It has an impressive oak-panelled room and in several places the original beams can be seen.



## Llanthony Secunda Priory ◆ G1 ♿

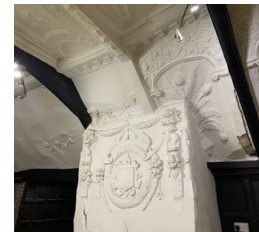
**Priory Junction (next to Gloucestershire College), Gloucester GL2 5FA**

**Friday 8th, Saturday 9th and Sunday 10th September 11.00 - 15.00**

Founded in 1136, the history of this newly restored, listed former Augustinian Priory is told throughout 5 acres of grounds. Marvel at the magnificent medieval timber roof and late 15th to early 16th century brickwork. In the medieval period the scholars of Llanthony Secunda created a very special library that is still considered one of the richest and best-documented medieval English book collections in the country. This remarkable library is no longer in Gloucester but is scattered across the world.

On Saturday 9th, there will be a demonstration of Wool Spinning and Basket Making between 11.30 and 13.30 followed by some traditional English music.

*(see entry under Guided Walks for details of guided walks here during the weekend)*



## Meek's (former shoe shop) ◆ C6

**14 Westgate Street GL1 2NL**

**Sunday 10th September 11.00-15.00**

This Elizabethan building has a Georgian façade and a fine plaster ceiling dating from around 1600 on the first floor. Formerly a shoe shop, it has recently been restored to preserve elements of the building's original features and the top two floors will become residential accommodation.

## Mercer's Hall (Masonic Lodge) ◆ D5

**Mercer's Lane, GL1 2HQ**

**Saturday 9th September 10.00 – 16.00**

**Tours to be held on the hour starting at 10.00.**

**Please meet at St Michael's Tower at The Cross where a guide will meet you.**

Probably built in the second half of the 18th century, this building has been occupied by a perfumier, a cider maker and a brewer and has been used as a bonded warehouse and dance hall. It is presently occupied by the Gloucester Freemasons as their Masonic Lodge.





## St Michael's Tower

◆ D6 ♿

**The Cross, Gloucester**

**Friday 8th- Sunday 10th 10.30 - 16.00**

St Michael's Bell Tower dates back to 1465. It has interesting heritage displays on the history of the church that once stood on the site, and 2 heritage bells made in Gloucester in 1710 by Abraham Rudhall.

A model of the medieval High Cross of Gloucester made by one of our Civic Trust members will be on display during the weekend.

The Tower is run by Civic Trust volunteers and you are sure of a warm welcome. Refreshments available.

Please be aware that the Tower is undergoing maintenance work and is surrounded by scaffolding.



## The New Antiques Centre

◆ C6 B

**26 Westgate Street**

**Friday 8th, Saturday 9th and Sunday 10th September  
09.30 - 16.30**

**Guided Tours available - Saturday and Sunday 11.00 and 13.00  
for which pre-booking is required. Maximum 15 per tour. Meet  
outside on Westgate Street. Tours last about an hour.**

Believed to be Britain's finest example of a timber framed town house, built in 1560, it was once the hall of the Grocers' Guild, the mansion house of a Mayor of Gloucester and, in the 19th century, a lodging for assize judges.



## Wotton House NEW

♿

**International School, Horton Road, Gloucester GL1 3PR**

**Saturday 9th September 10.00 - 13.00**

Wotton House has been part of the Wotton landscape since 1707, home to some fascinating characters and, for almost 100 years, educating many students.

(see entry under Talks for details of a talk "Wotton House: A Societal and Arboreal History" on Saturday 9th September at 11.00 at Wotton House. Pre-booking required for the talk.).



## Beatrix Potter Museum

◆ G6

**College Court**

**Friday 8th September and Saturday 9th September 10.00 -17.00**

In 1903 Beatrix Potter published one of her most loved tales, The Tailor of Gloucester, inspired by a visit she made to the city. See the building she based her story on and meet the Tailor, Simpkin the cat and a host of other characters. (see entry under Guided Walks for details of a guided walk around places of Gloucester connected with Beatrix Potter)



## The Folk of Gloucester

◆ C4 ♿ (partial access) B

**99-103 Westgate Street GL1 2PG**

**Guided Tours: "If Only Walls could Talk"**

**Friday 8th September 14.30 and Sunday 10th September 11.30**

**Pre-booking required. Maximum 10 per tour**

**The tour lasts about 45 minutes**

Find out about the buildings and the people who owned them or worked or lived in them during the last 500 years. Find out about pin makers, the last baby born here, Bishop Hooper's last night before being burnt at the stake and much more.

The Secret Garden Café and Heritage Bar will be open for refreshments.

(see entry under Events for details of what else is on at The Folk over the weekend)

## Heritage Hub

◆ A8 B

**Alvin Street, Kingsholm GL1 3DW**

**Friday 8th September Tours at 10.30 and 14.00**

**Pre-booking essential as there is limited space. Max 15 per tour.**

Join John Putley in a behind the scenes quest to discover unexpected treasures in the strongrooms on the theme of inventions, designs and creativity. Followed by refreshments in our community garden (weather permitting).



## Jet Age Museum

◆ B10 ♿

**Meteor Business Park, Cheltenham Road East, Staverton**

**Saturday 9th September and Sunday 10th September 10.00 -16.00**

**Free parking**

Jet Age Museum exists to promote and preserve the history of Gloucestershire's contribution to world aviation. Visit the collection which includes aircraft from the early days of flight to the present day. The Museum's Vulcan bomber cockpit and Trident airliner cockpit and cabin will be open subject to availability.

(see entry under Talks for details of a talk on Whittle on Saturday 9th September, 14.00 at St John's Church, Gloucester. Pre-booking required)



## Museum of Gloucester

◆ E6 ♿

Brunswick Road, Gloucester GL1 1HP

Friday 8th, Saturday 9th and Sunday 10th September 10.00 -16.00

Behind the scenes tour on Saturday 9th September: between 14.00 and 15.00

Free entry for all three days

We will also be offering historical dressing up, and colouring and craft activities.

## Nature in Art NEW

♿

Wallsworth Hall, Main A38, Twigworth GL2 9PG (use this postcode in Sat Nav). Friday 8th September 10.00 -17.00

Free entry to the Hall and talks on this day.

A fine Georgian mansion situated just north of Gloucester, Wallsworth Hall has a curiously obscure history. Since 1988 the Hall has been the home of Nature in Art, the world's first museum dedicated to Art-inspired Nature.

(see entry under Talks for details on talks on The History of Wallsworth Hall on Friday 8th September. Pre-booking required)



## THE DOCKS

### Mariners Church

◆ F3 ♿

Gloucester Docks

Friday 8th and Saturday 9th September 10.00 -17.00

Sunday 10th September 13.00-17.00

Mariners Church opened in 1849 and became popular with the townspeople as well as the mariners visiting the port. The Chaplain was responsible for visiting every ship that arrived. The church features fine stained glass windows. An active church continues to meet in the building. (see also entry under Places of Worship and Talks)



## Sula Lightship

◆ G2 B

Llanthony Wharf, Gloucester GL2 5JQ

Pre-booking required

Maximum 8 for each tour

Friday 8th September Morning only 10.00-13.00

4 tours of 45 minutes each: 10.00, 10.45, 11.30 and 12.15

Saturday 9th September Morning 10.00 -13.00

4 tours of 45 minutes each: 10.00, 10.45, 11.30 and 12.15

Afternoon 13.30 – 16.30

4 tours of 45 minutes each: 13.30, 14.15, 15.00, 15.45

Sunday 10th September Morning only 10.00 -13.00

4 tours of 45 minutes each: 10.00, 10.45, 11.30 and 12.15

The Lightship is a registered historic ship and as such is unsuitable for any visitor with mobility problems as the tour involves sloping decks and steep external ladders. Children are welcome but must be supervised at all times. The tours are of the internal areas only.

## Tommi Nielson's Dry Docks

◆ F2/3 ♿

Gloucester Docks

Friday 8th - Sunday 10th September

See the original graving (dry) docks now used by Tommi Nielsen's traditional shipbuilding and rigging company. This is one of the few remaining shipyards with the skills to work on traditional wooden vessels. The workshop is not open to the public



## Waterways Museum

Gloucester Docks

Friday 8th and Saturday 9th September 10.00 -16.00

Free entry on these days.

In 2023 The National Waterways Museum, Gloucester is celebrating the 150th anniversary of Llanthony Warehouse, its home in the Gloucester Docks which was built in 1873. Throughout the summer and the Heritage Open Days visitors will be able to take part in a celebration of the architecture of the building, through trails and family activities. There will be junk modelling days culminating in a display of models on the newly opened Level 2 of Llanthony Warehouse on the 8th and 9th September 2023.

[www.canalrivertrust.org.uk/gloucester](http://www.canalrivertrust.org.uk/gloucester)

◆ G3 ♿

## Upstairs Downstairs Antiques

2, Severn Road, Gloucester Docks GL1 2LE

Friday 8th , Saturday 9th and Sunday 10th September  
10.00 -16.00

The building is over 200 years old, dating back to 1815. It was originally used for the manufacture of rope and sails for the tall ships and those powered by steam.

◆ E3



**The Folk of Gloucester**  
Community Heritage Centre



**Drop in: there is no booking required for any of these Places of Worship**

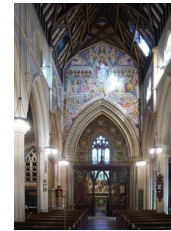
## Friends Meeting House

◆ E5 ♿ (partial access)

Greyfriars GL1 1UA

Saturday 9th September 10.00-16.00 and Sunday 10th  
September 12.00-16.00

Built in 1834, this Grade I listed Quakers Meeting House has a large unique wooden screen between the two main rooms which can be wound up and down to make one large space. A large portico with a schoolroom above was added in 1878. Quakers were first known to be in Gloucester by 1655 and the first Meeting House was established in the city in 1678.



## Holy Innocents Church

♿

Highnam GL2 8DG

Sunday 10th September 13.00-17.00

Visit this Grade I listed Victorian Church with its unique Spirit Fresco wall paintings. The church was built and painted by Thomas Gambier Parry, whose son Hubert Parry composed the music to Jerusalem.

## Holy Trinity Church

◆ B10 ♿

Church Road, Longlevens GL2 0AJ

Friday 8th – Sunday 10th September 10.00-16.00

This is an interesting Grade II listed 1930s structure designed by Harold Stratton-Davis in a 15th century style. It contains medieval stained-glass windows from the now demolished church of St Luke the Less.

## Mariners Church

◆ F3 ♿

Friday 8th and Saturday 9th September 10.00-17.00; Sunday  
10th September 13.00-17.00 (see entry under The Docks)



## Masjid-e-noor Mosque **NEW**

◆ G3 ♿

Ryecroft Street, Gloucester GL1 4LY

Sunday 10th September 10.00-11.30

Opened in 1983, this is the first ever purpose-built Masjid (Mosque) in the Southwest of England and Wales. In the 1960s money was collected from the small Muslim population in Gloucester to hire a hall in Ryecroft Street with Gloucester Park being used for praying on the Eid festival. Fundraising within Gloucester and beyond enabled work to start in the late 1970s on a purpose-built Mosque sympathetic to the local buildings. The Mosque can now accommodate 1000 worshippers.





## Southgate Evangelical Church

◆ G4 ♿

**146 Southgate Street GL1 2EX**

**Saturday 9th September 10.00-17.00**

Established by Dr Walter Hadwen in 1906 it has been a place of Christian Worship in the city centre ever since, open to worshippers of all ages and backgrounds.



## St Catharine's Church

◆ B107 ♿

**Wotton Pitch, London Road GL2 0RR**

**Saturday 9th September 10.00-15.00**

Although established in part of St Oswald's Priory in 1540, the current church building is only 103 years old. Now fit for 21st century church use, it affords an opportunity for interactive or quiet prayer/reflection. Light refreshments will be available.

St Catharine's will be taking part in the Ride and Stride (supported by the National Churches Trust) event on this day too.

## St John's Northgate Methodist Church

◆ G6 ♿

**Northgate Street GL1 2AN**

**Friday 8th September 11.00-14.00**

A Classical Grade II\* Georgian church opened in 1734, only the tower, spire and font survive from the earlier medieval building. Several important people were connected with the church such as Raikes, Rich and Rudhall and the East Window was installed in 1880 to commemorate the centenary of the Sunday School Movement.



## St Margaret's Chapel

◆ B107 ♿

**London Road GL1 3PL**

**Saturday 9th and Sunday 10th September 11.00-16.00**

The Chapel was part of a monastic institution set up outside the medieval city boundary for the benefit of those suffering from leprosy. The present building is thought to be from the early 1400s but incorporates earlier masonry in the west wall. It is now under the patronage of St Margaret of Scotland an English princess who became Queen of Scotland.



## St Margaret's Church, Whaddon **NEW**

♿

**Church Lane, Whaddon, Gloucester GL4 0UE**

**Saturday 9th September 11.00-15.00**

Parking at Wynstones School, Stroud Road, Gloucester

This Grade II\* listed 13th century church is delighted to offer access to the church, vestry, tower and church yard. Attendees will have the rare opportunity to go up the tower to the flag room, offering a view of the original roofing timbers and graffiti from the 1800s.



## St Mary de Crypt Church and the Old Crypt School Rooms

◆ E5 ♿

**Southgate Street GL1 1TP**

**Friday 8th September – Sunday 10th September 11.00-15.00**

St Mary de Crypt is a Grade I listed church and regarded as one of Gloucester's most important medieval churches. Of Norman origin, it was substantially rebuilt in the late 1300s.

Explore the medieval church and Tudor schoolrooms. Use our app and talking pens to discover stories from Gloucester's past: Raikes, Whitefield and Jemmy Wood and more.

**Events over the weekend:**

**"Bones and Bells" Tours Friday 8th – Sunday 10th September at 11.00 and 14.00**

**B**

Spaces for this unique opportunity to be booked via

**[discoverdecrypt.org.uk](http://discoverdecrypt.org.uk)**

A guided tour of the Crypt and Bell Tower, with the opportunity to ring the bells.

**Saturday 9th September morning concert, "Feast of the Baroque" with Suoni Chiari, as part of our Concert and Cake series.**

**Refreshments available in the Old Crypt Schoolrooms.**

## St Mary de Lode Church

◆ A5

**Archdeacon Street GL1 2BT**

The city's oldest parish church is mentioned in the Domesday Book in 1085. Built over a Saxon church and a Roman building, the Roman mosaic tiled floor can still be seen in the church. It was used as a prison for Royalist soldiers during the Civil War in 1643.

*Due to building works it may not be possible to enter the church over the weekend.*



## **St Mary Magdelene Chapel** ♦ B107 ♿ for chapel, walk is uneven

**Hillfield Gardens London Road GL1 3HN**

**Saturday 9th September as part of guided walk around gardens.**

**Times for walks: 10.30 and 14.00 (see Walks section for more details)**

**Sunday 10th September 14.00-16.00**

In the Victorian gardens of Hillfield House, it is the remains of a 12th century leper chapel. It contains a stone recumbent figure which some people believe to be the effigy of St Kyneburgh.

## **St Mary's Congregational Church** **NEW** ♦ A5

**St Mary's Street GL1 2QS**

**Saturday 9th September 11.00-15.00**

Originally in St Mary's Square, the church was relocated to St Mary's Street following the redevelopment of the city. The building was bought by Selina, Countess of Huntingdon, in 1788 for the Gloucester followers of George Whitefield, the famous 18th Century preacher. Originally called St Mary's Hall, it then moved to St Mary's Congregational Hall in 1958.



## **St Nicholas' Church** ♦ B4

**Lower Westgate Street, GL1 2PG**

**Friday 8th-Sunday 10th September 11.00-15.00**

A beautiful, medieval church with many interesting features and sympathetic Victorian restoration - Walton tomb, leaning tower, sanctuary knocker, squints, coat of arms.



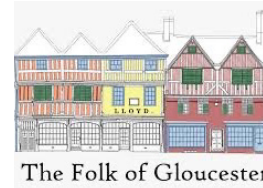
## **St Swithun's Church** **NEW** ♿

**St Swithun's Road, Hempsted GL2 5LH**

**Friday 8th September 10.00-13.00, Saturday 9th and Sunday 10th September 14.00-17.00 with a short talk on the History of Hempsted each day (see entry under Talks for details)**

A church has existed in Hempsted from 826 A.D. and the Norman font was in the original church. The present church is mid-15th century and extensive renovations took place in 1885 with the addition of an extra bell, monuments and stained glass windows.

**Teas in the adjoining Lysons Hall – Saturday and Sunday 14.00-17.00**



The Folk of Gloucester

## **THE FOLK OF GLOUCESTER** ♦ C4 ♿ (partial)

**99 - 103 Westgate Street, Gloucester GL1 2PG**

**Friday 8th - Sunday 10th September 10.00 -16.00**

Visit our beautiful Tudor buildings which are the hub of the Civic Trust. There are many events taking place over the weekend.

### **Exhibitions**

- **The Gloucester Gates:** A child's eye view of Gloucester. Children from six local primary schools have worked with Voices Gloucester, and artist Catherine Hawkrigde, supported by friends from Gloucestershire Archives and the Gloucester Civic Trust
- **"What Gloucester Means to Me":** An Art exhibition of work by pupils from Parton Manor Junior School, Churchdown. You will also have a chance to produce your own contribution to this exhibition when you visit The Folk.

### **Guided Tours: "If Only Walls could Talk"**

**Friday 8th September 14.30 and Sunday 10th September 11.30**

**Pre-booking required.**

(see entry for Cultural Venues for further details)

### **Talks**

These will take place each day in the Ed Shed at The Folk (see entry under Talks for further details)

### **Heritage Skills Fair**

**Saturday 9th September 10.00 – 16.00**

**FREE ENTRY**

There will be displays and demonstrations reflecting our rich skills heritage

- Gloucester City Centre Conservation Area display
- Lime works, energy efficiency and retrofit
- Westgate Street-Then and Now
- Stonemasons and sculptors
- Gloucester's Local List
- Traditional signwriting
- Wall Art talk with Kathryn Davis -booking required (see entry under Talks for further details)
- Dendrochronology Talk and Walk with Andy Moir- booking required (see entry under Talks for further details)



**The Secret Garden Café and Heritage Bar will be open each day.**



# GLOUCESTER Heritage Open Days

Other sites of interest in the City include:

**Historic Inns** - for information go to  
[www.gloucestercivictrust.org/heritage-open-days](http://www.gloucestercivictrust.org/heritage-open-days)

## Displays of Old Gloucester

If you are interested in seeing pictures and murals of Gloucester's past then there are a number of sites around the city. Why not take a stroll round and see for yourself.

Start with the displays and videos in St Michael's Tower then choose from the following:-

- Sainsbury's mural, Hare Lane
- Boots mural, Brunswick Road
- A number of the Public Houses have photos on their walls inside e.g. Northend Vaults, The Criterion, The Tall Ship

*... and many other places - look around*

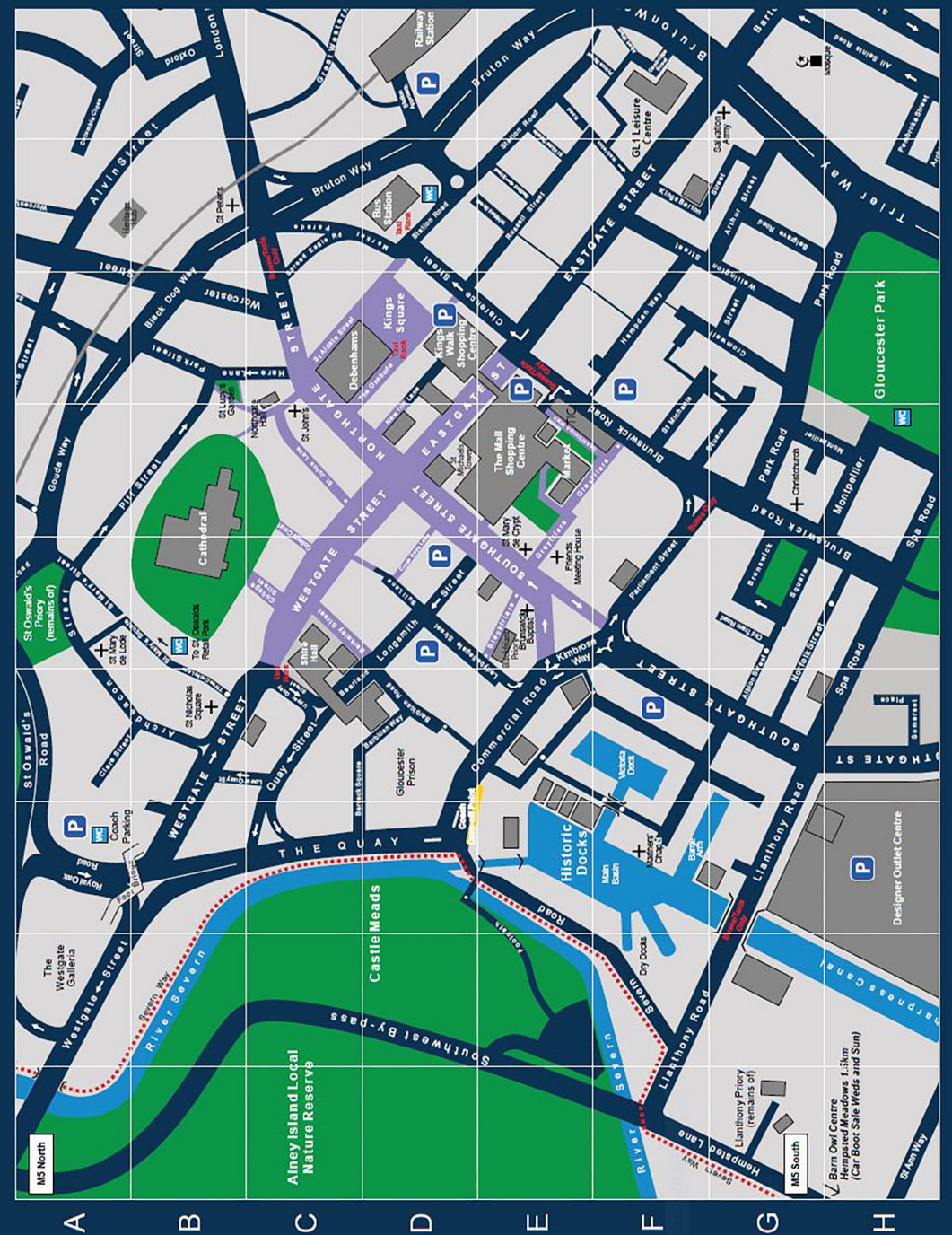
## Useful Links

Gloucester HODs ticket booking website  
<https://buytickets.at/gloucestercivictrustlimited>

Gloucester Civic Trust Website:  
<https://www.gloucestercivictrust.org/>

Gloucester Heritage Open Days Social Media:  
Facebook: <https://www.facebook.com/GloucesterHODs>  
Twitter: <https://twitter.com/GloucesterHODs>  
Instagram: <https://www.instagram.com/gloucesterhods/>

Gloucester Civic Trust Social Media:  
Facebook: <https://www.facebook.com/GloucesterCivicTrust>  
Twitter: <https://twitter.com/GlosCivicTrust>  
Instagram: <https://www.instagram.com/gloscivictrust/>





SUPPORTED BY

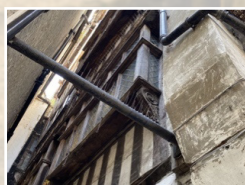
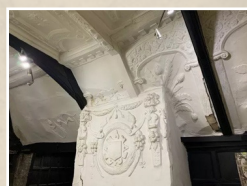
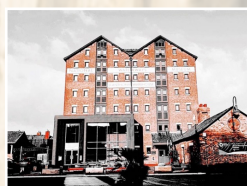
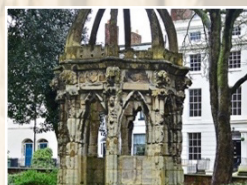


Made possible with  
**Heritage  
Fund**

**heritage open days**



Gloucester  
Civic Trust



**Gloucester Civic Trust Limited**

Company Registered in England & Wales Reg No. 01078805 Charity No 264719

Registered Office: Bishop Hooper House, 99-103 Westgate Street, Gloucester GL1 2PG

Designed and printed by

**colour  
connection**  
graphic design print

[www.gloucestercivictrust.org/heritage-open-days](http://www.gloucestercivictrust.org/heritage-open-days)